



# CITRUS WEEKLY LOGISTICS REPORT – Week 25

20 June 2025 – Week 25 (Data supplied by: PPECB & AGRIHUB (YTD data to week 24 only)/CGA VFG's/windy.com/CGA Team)

- Reported data reflects only production and export data from South Africa. Kindly contact [portia@cga.co.za](mailto:portia@cga.co.za) for production and export data sourced from eSwatini, Zimbabwe, Botswana and Namibia.
- Reported data can be supplemented further by Agrihub, PPECB, Agrigate One, eCert and CGA online Dashboards.
- The report is a work in progress and additional data and information will be added in future reports.
- Port Operational Representatives: Northern Corridor - Dave Watts, Central Corridor - Mitchell Brooke & Western Corridor - Antoinette van Heerden.

Compiled by -  
Mitchell Brooke  
[mitchell@cga.co.za](mailto:mitchell@cga.co.za)



**Citrus  
Growers'  
Association**  
OF SOUTHERN AFRICA



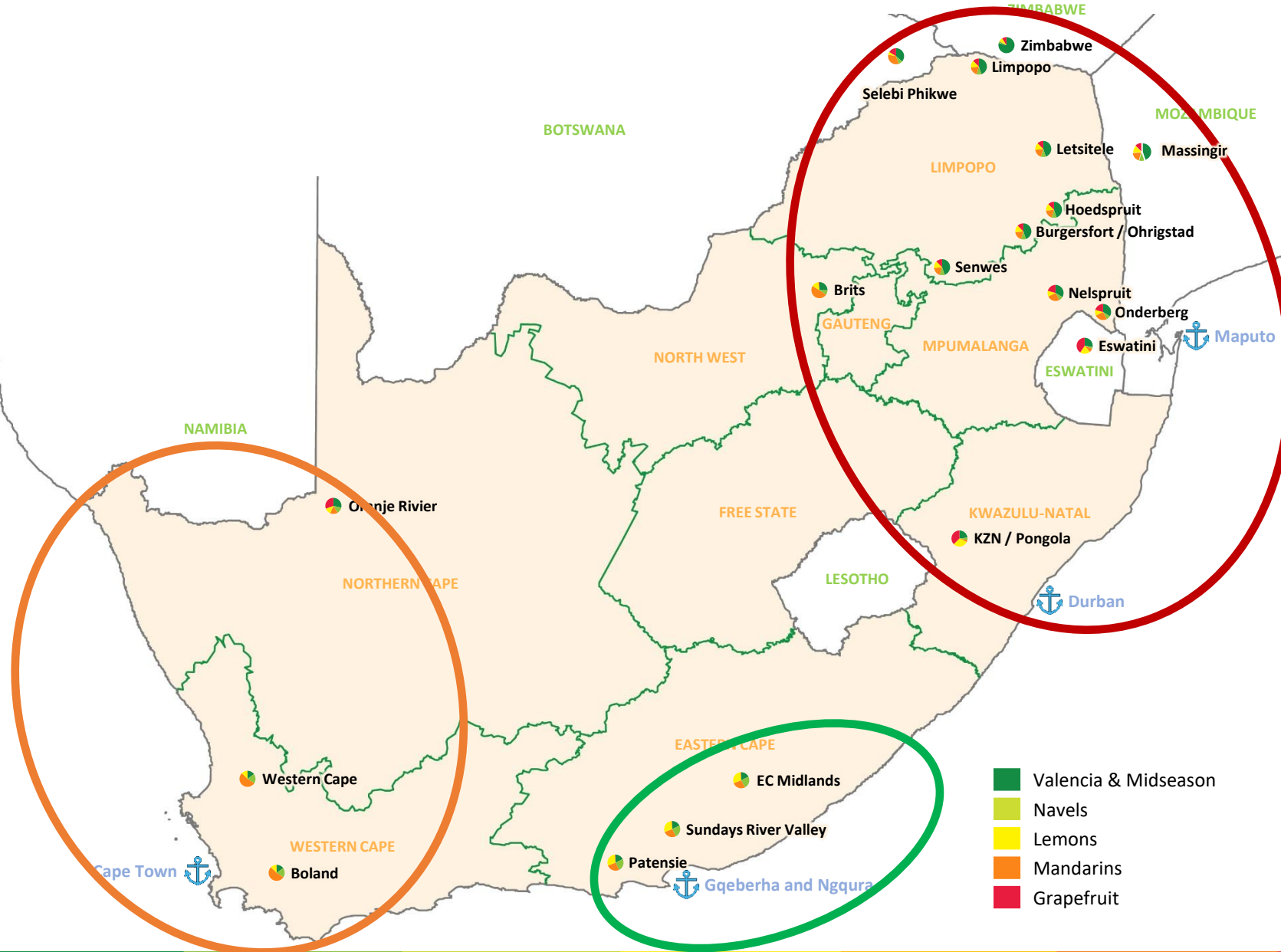
### DISCLAIMER:

*This information contained has been compiled with data presently available and is presented and made available in good faith but with the express condition that the Citrus Growers Association accepts no liability whatsoever for any loss or damage resulting from the use thereof.*





# Southern African Citrus Growing Regions and Key Export Corridors



## Key Export Corridors

-  **Northern Corridor** including KZN, eSwatini, Mpumalanga, Limpopo, North West Province, Botswana, Zimbabwe and Mozambique exporting from the Maputo and Durban ports.
-  **Central Corridor** including Patensie and Hankey area, Sundays River Valley including Addo, Sunland and Kirkwood and Eastern Cape Midlands including Fort Beaufort area exporting from the Port Elizabeth and Coega ports.
-  **Western Corridor** including Namibia, WC Boland, Citrusdal and Orange River area exporting from the Cape Town port.



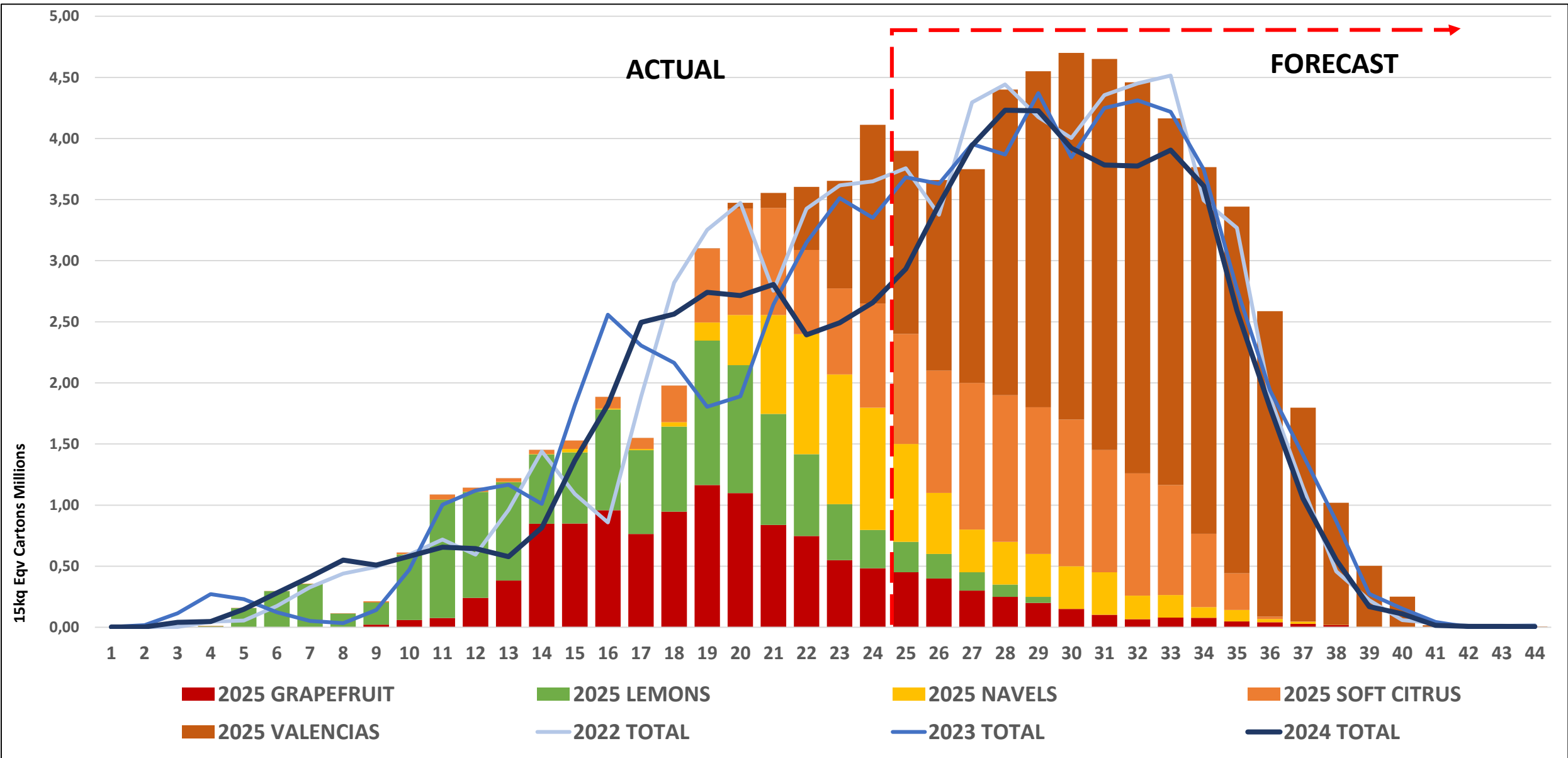
# YTD CITRUS PRODUCTION FOR EXPORT BY CORRIDOR BY COMMODITY

*Note:*

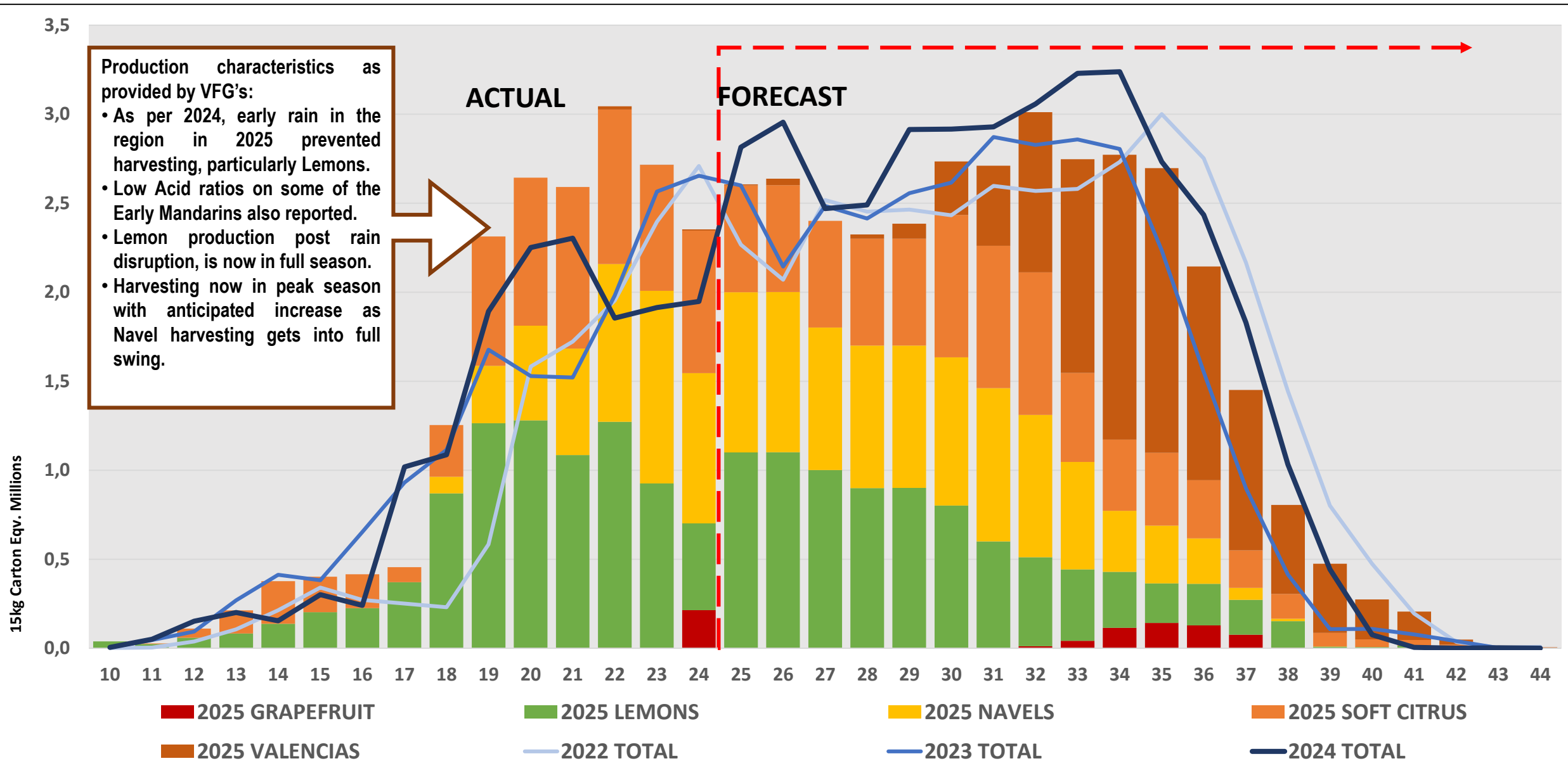
- Estimates will be updated as per amendments made by the VFG's latest estimates.
- The data represents YTD totals of production for export volume YTD.

Sum of CGA 15kg Eqv. Cartons						2025 Total Estimate Ver:4	2024 Final Packed
Supplier Region	Product	2022 YTD	2023 YTD	2024 YTD	2025 YTD		
Eastern Cape Regions	GRAPEFRUIT		4 588	5 350	2 949	498 667	496 564
	LEMONS	5 884 875	8 070 763	7 713 254	7 846 299	16 882 000	19 077 633
	NAVELS	2 506 898	3 377 211	2 651 264	3 512 376	11 727 170	12 446 668
	SOFT CITRUS	3 866 135	4 333 455	4 976 091	5 227 808	12 249 090	11 633 722
	VALENCIAS	30 028	49 545	26 541	19 635	9 222 000	9 285 934
Eastern Cape Regions Total		12 287 936	15 835 562	15 372 500	16 609 068	50 578 927	52 940 521
Northern Regions	GRAPEFRUIT	12 083 016	9 847 847	10 117 888	10 026 040	12 963 963	12 525 469
	LEMONS	10 227 925	10 827 352	9 739 856	12 261 766	12 744 500	10 938 428
	NAVELS	4 676 630	3 984 591	3 940 130	4 508 226	6 624 020	5 938 962
	SOFT CITRUS	3 528 417	4 288 213	4 197 935	5 295 877	14 323 937	13 260 848
	VALENCIAS	1 778 869	2 005 776	1 315 024	3 041 482	36 234 304	33 865 756
Northern Regions Total		32 294 857	30 953 779	29 310 832	35 133 391	82 890 724	76 529 463
Western/Northern Cape Regions	GRAPEFRUIT	629 240	613 073	391 340	615 227	1 643 333	1 318 632
	LEMONS	2 219 778	2 425 108	2 161 972	2 286 376	4 500 000	4 395 901
	NAVELS	2 819 403	2 519 938	2 552 189	2 894 970	7 636 114	6 613 235
	SOFT CITRUS	3 970 955	5 477 158	5 434 988	6 957 684	18 713 161	16 735 081
	VALENCIAS	91 408	87 611	707	34 762	6 520 000	5 566 498
Western/Northern Cape Regions Total		9 730 784	11 122 888	10 541 196	12 789 019	39 012 608	34 629 347
Grand Total		54 313 577	57 912 229	55 224 528	64 531 478	172 482 259	164 099 331

## YTD NORTHERN CORRIDORS EXPORT PRODUCTION ACTUAL & FORECAST BY WEEK BY COMMODITY (15Kg Eqv. Cartons)

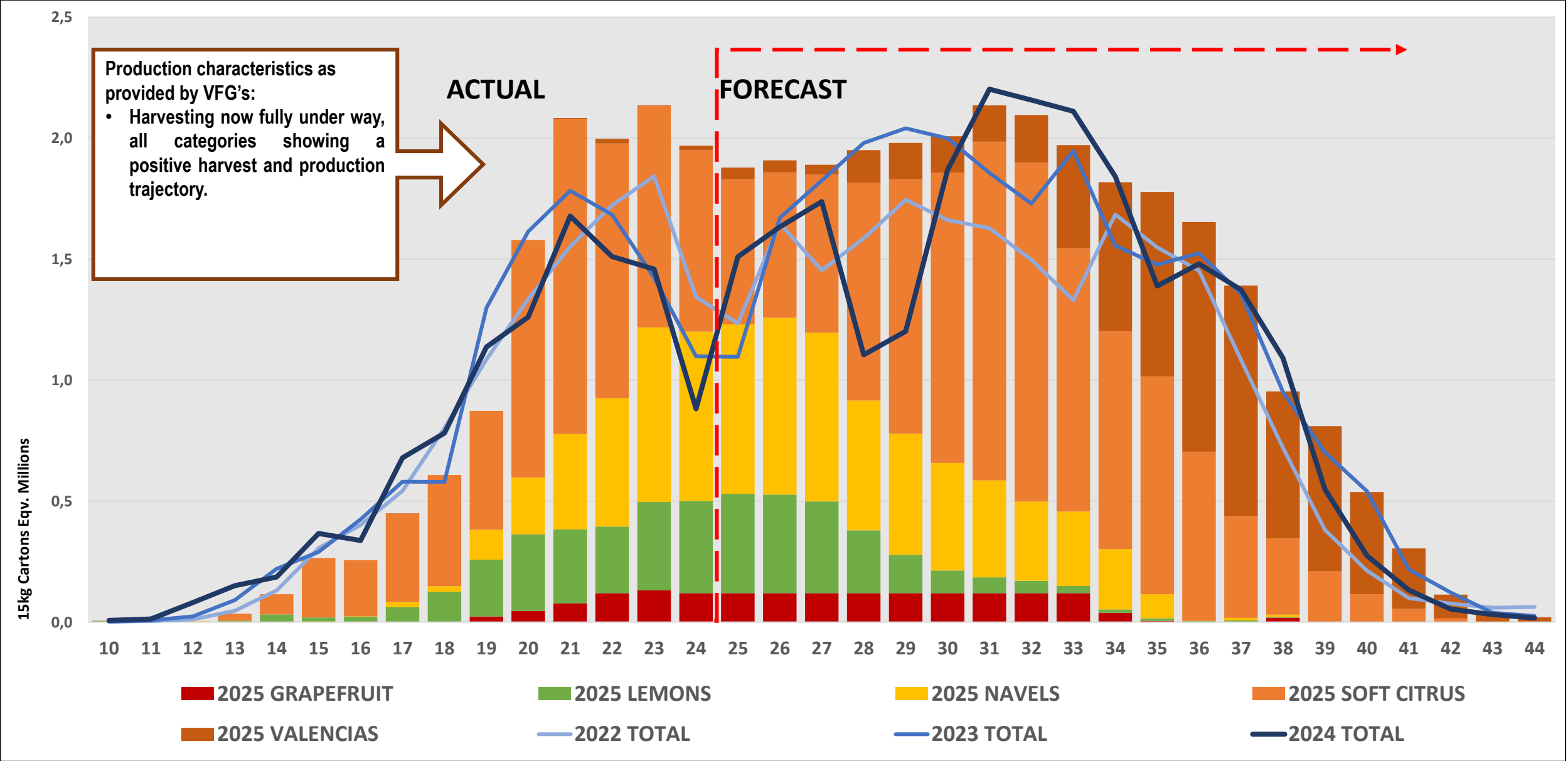


## YTD CENTRAL CORRIDORS EXPORT PRODUCTION ACTUAL & FORECAST BY WEEK BY COMMODITY (15Kg Eqv. Cartons)



# YTD WESTERN CORRIDORS EXPORT PRODUCTION ACTUAL & FORECAST BY WEEK BY COMMODITY

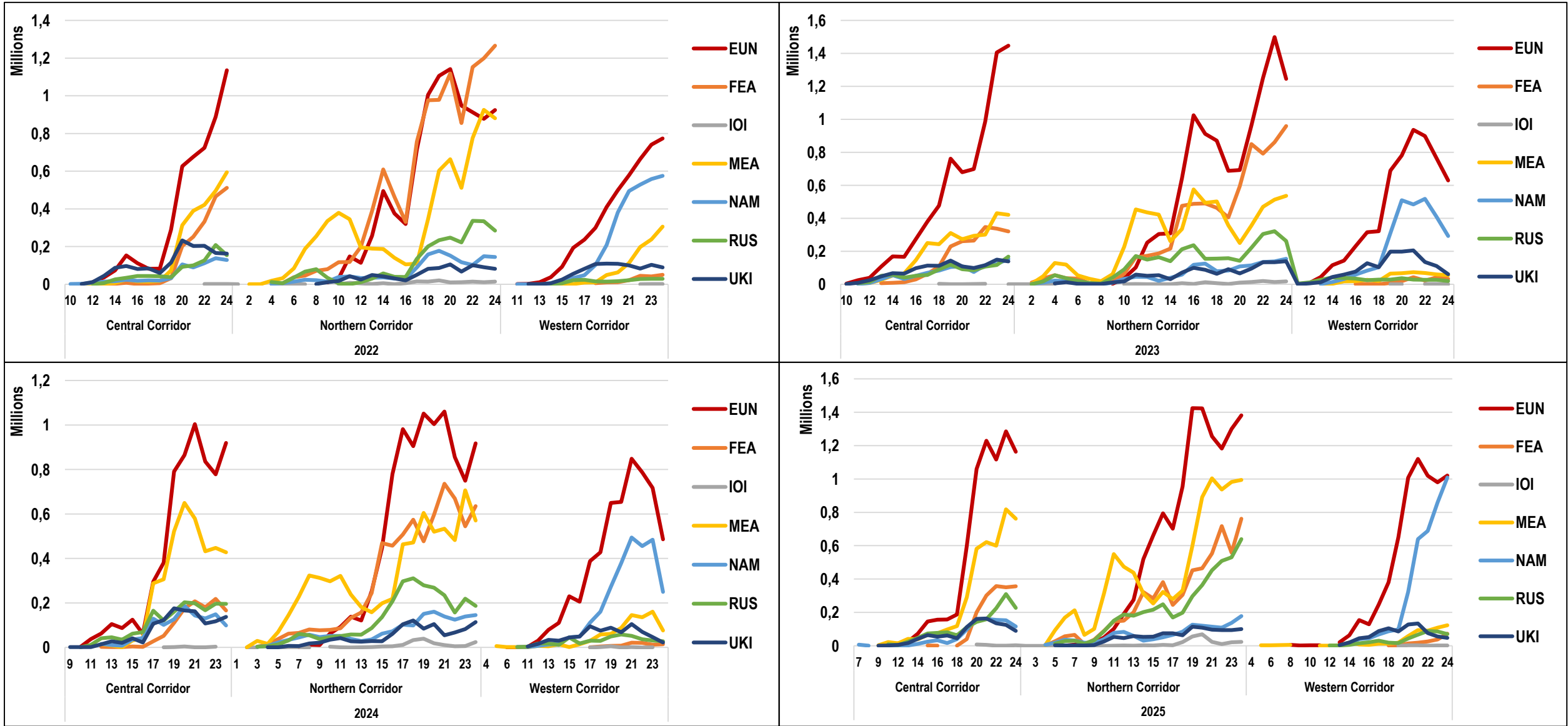
(15Kg Eqv. Cartons)



# 2022-2025 YTD TOTAL EXPORT PRODUCTION BY CORRIDOR REGION BY TARGET MARKET

(15Kg Eqv. Cartons)

*Note: The data in the tables represents PPECB passed for export cartons at pack house level. Consignments would then be transported to point of inland/port storage and then be loaded out to containers or conventional vessels. It provides an early indication of the volume of product to be routed through the port system to intended target market. The dwell time for consignments being passed and physically being shipped and stacked at container terminals could be 7-14days.*

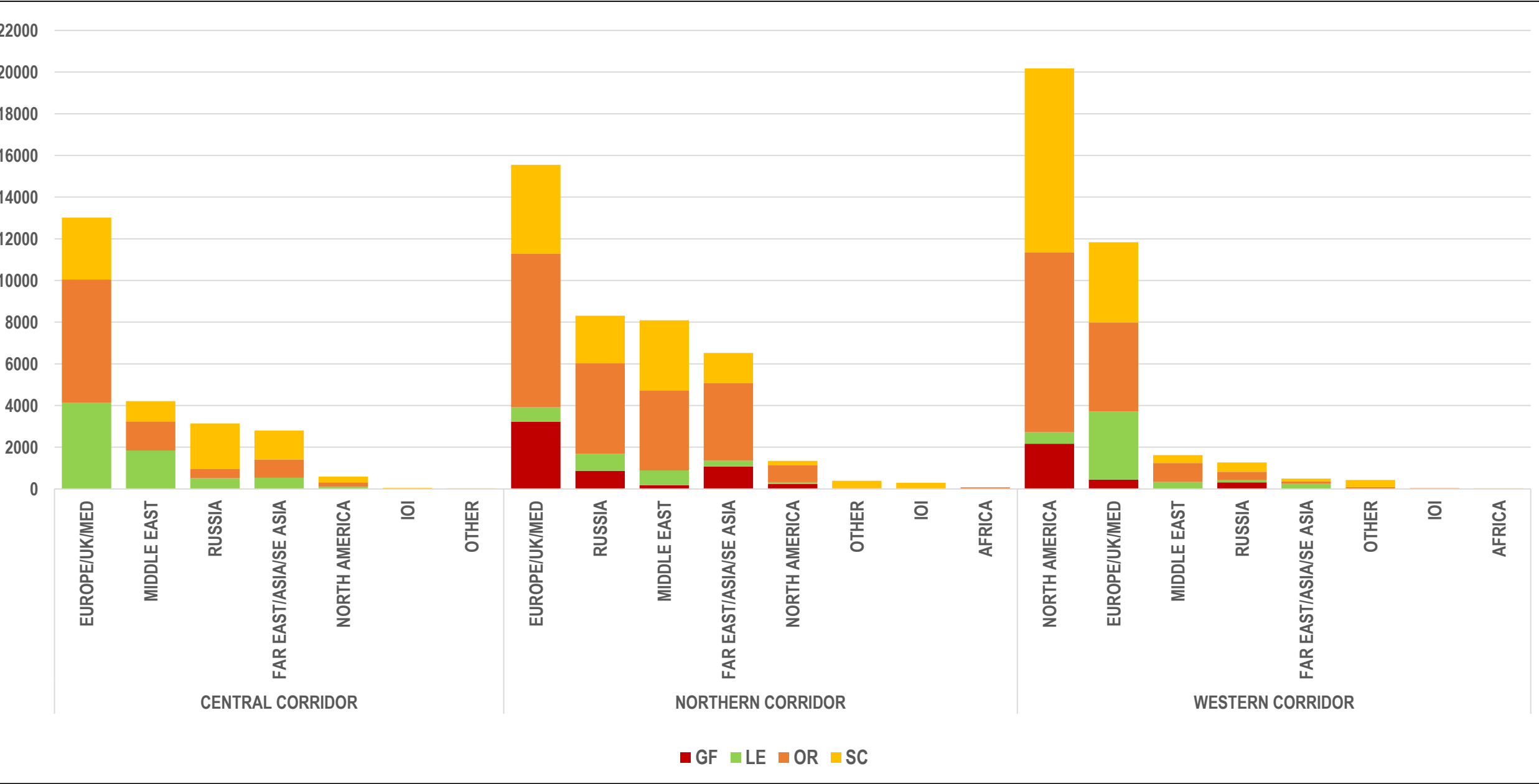




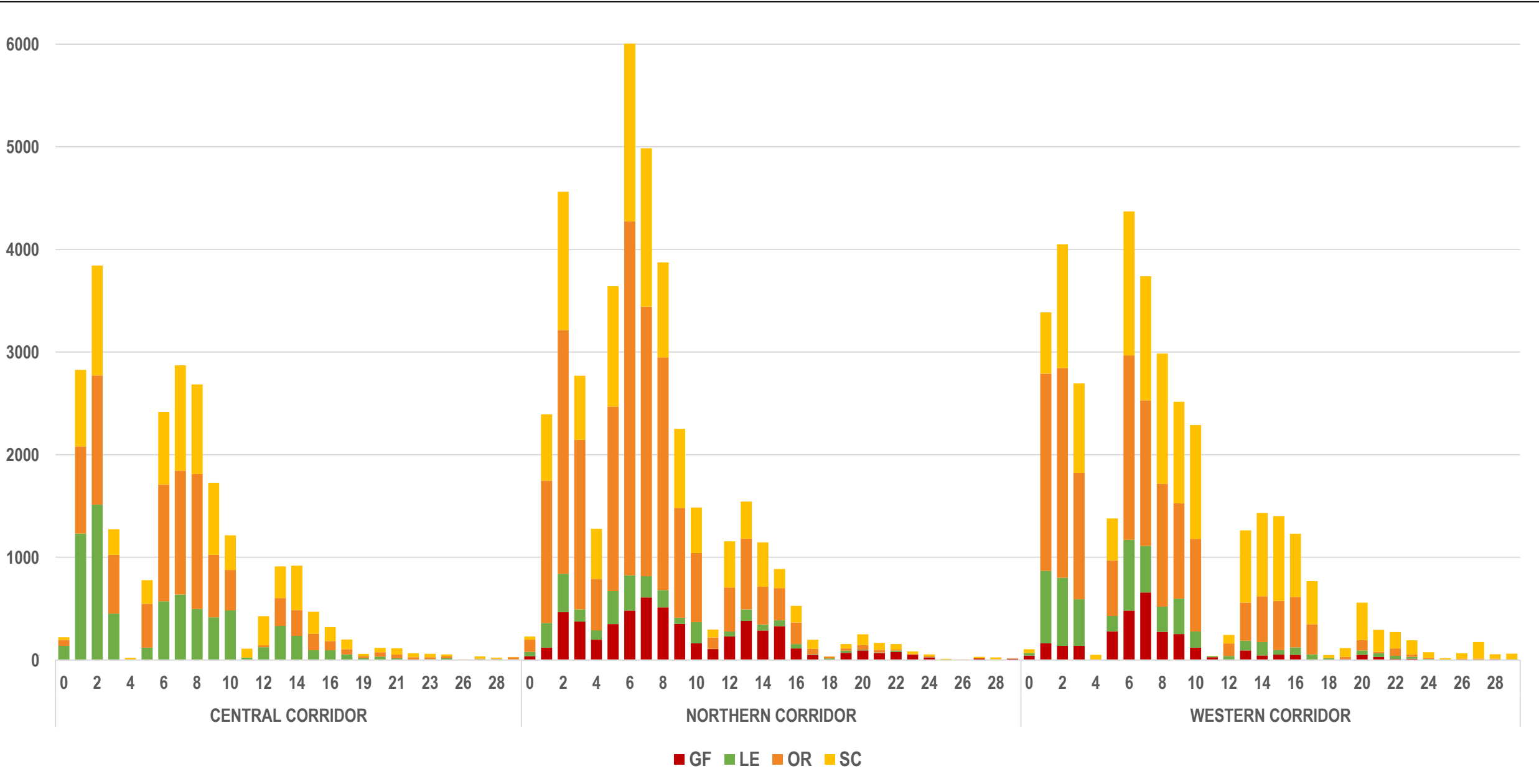
**(15Kg Eqv. Cartons)**

The chart displays export volumes in millions for five citrus fruit categories: Grapefruit, Lemons, Navels, Soft Citrus, and Valencia. The data is presented from 2016 to 2024, with the year 2025 partially visible. The y-axis represents volume in millions, ranging from 0.0 to 1.6. The x-axis shows the years from 2016 to 2024, with 2025 indicated at the bottom. The legend identifies seven destination regions: EUN (red), FEA (orange), IDI (grey), MEA (yellow), NAM (teal), RUS (green), and UKI (blue). The chart shows significant fluctuations in export volumes over the years, with a notable peak in EUN exports for Lemons in 2020 and a sharp increase in EUN exports for Navels in 2023. Other regions like MEA and NAM also show significant growth in exports for several categories, particularly in the later years of the period shown.

# DAILY SNAPSHOT OF AGRIHUB STOCK REPORT BY COMMODITY BY TARGET REGION (Pallets)



# DAILY SNAPSHOT OF AGRIHUB STOCK REPORT BY COMMODITY BY DWELL AGE DAYS (Pallets)



# YTD CITRUS EXPORT BY EXIT PORT BY SHIP MODE

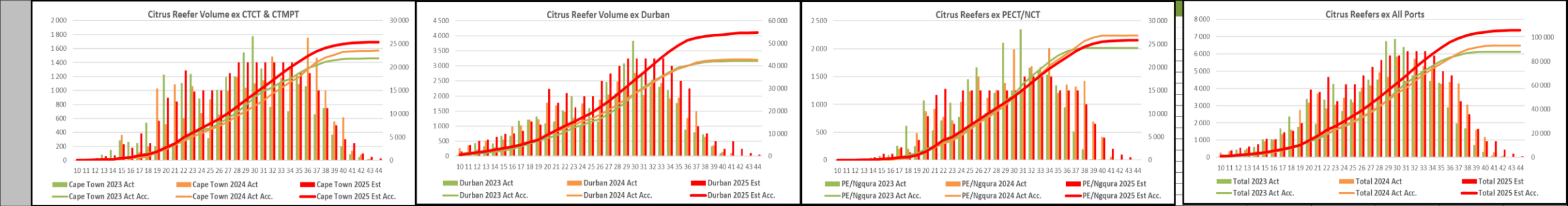
(SOURCE: PPECB)

Sum of Pallet Qty		Year			
Exit Port	Ship Mode	2021	2022	2023	2025
▣ Cape Town	Reefer Container	116 831	99 539	130 414	128 364
	Specialized Reefer Ship	18 856	25 039	25 585	14 145
Cape Town Total		135 687	124 578	155 999	142 509
▣ Durban	Reefer Container	335 553	283 845	273 778	316 868
	Specialized Reefer Ship	60 619	18 990	47 593	38 579
Durban Total		396 172	302 835	321 371	355 447
▣ PE/Coega	Reefer Container	99 789	75 900	109 637	99 426
	Specialized Reefer Ship	3 485	1 868	1 365	5 093
PE/Coega Total		103 274	77 768	111 002	104 519
▣ Maputo	Reefer Container		1 131	1 601	60
Maputo Total			1 131	1 601	60
Total by Ship Mode	Reefer Container	552 173	460 415	515 430	544 717
	Specialized Reefer Ship	82 960	45 897	74 543	57 817
Total All Ports		635 133	506 312	589 973	602 534



YTD ACTUAL AND FORECAST EXPORTS IN REEFER CONTAINERS BY EXIT PORT (FEU)

CITRUS CONTAINERISED VOLUME SHIPPING STATISTICS - 2025 est																										
Week	Cape Town 2023 Act	Cape Town 2024 Act	Cape Town 2025 Est	Cape Town 2023 Act Acc.	Cape Town 2024 Act Acc.	Cape Town 2025 Est Acc.	Durban 2023 Act	Durban 2024 Act	Durban 2025 Est	Durban 2023 Act Acc.	Durban 2024 Act Acc.	Durban 2025 Est Acc.	PE/Ngqura 2023 Act	PE/Ngqura 2024 Act	PE/Ngqura 2025 Est	PE/Ngqura 2023 Act Acc.	PE/Ngqura 2024 Act Acc.	PE/Ngqura 2025 Est Acc.	Total 2023 Act	Total 2024 Act	Total 2025 Est	Total 2023 Act Acc.	Total 2024 Act Acc.	Total 2025 Est Acc.		
10	0	7	12	3	33	50	43	271	157	516	1 054	703	0	1	1	1	1	1	43	279	170	520	1 088	1 754		
11	14	3	25	17	36	75	110	365	373	626	1 419	1 076	0	0	1	1	1	2	124	368	399	644	1 456	1 153		
12	20	9	34	36	45	109	436	217	512	1 061	1 637	1 587	2	2	17	3	3	19	457	229	563	1 101	1 685	1 715		
13	83	8	63	120	53	172	338	507	553	1 399	2 144	2 141	4	1	17	7	4	36	425	516	633	1 526	2 201	2 348		
14	150	29	74	270	82	245	421	291	645	1 820	2 435	2 786	46	12	47	53	16	83	617	332	765	2 142	2 533	3 114		
15	285	365	229	555	447	475	685	553	737	2 505	2 988	3 523	81	23	115	134	39	198	1 050	941	1 082	3 193	3 474	4 196		
16	265	46	179	820	493	654	683	984	761	3 188	3 973	4 284	94	10	111	228	49	309	1 043	1 040	1 052	4 236	4 514	5 247		
17	249	114	382	1 069	607	1 036	1 180	1 030	844	4 368	5 002	5 128	257	205	230	484	254	539	1 686	1 349	1 456	5 921	5 863	6 703		
18	538	198	247	1 607	805	1 283	1 216	1 210	1 150	5 585	6 212	6 278	616	203	139	1 100	457	678	2 370	1 611	1 536	8 292	7 473	8 239		
19	206	1 030	565	1 813	1 835	1 849	1 314	1 226	1 054	6 899	7 438	7 332	249	489	362	1 349	945	1 040	1 769	2 744	1 982	10 061	10 218	10 221		
20	1 225	516	898	3 038	2 351	2 746	1 082	1 781	2 231	7 981	9 219	9 563	1 074	876	792	2 424	1 821	1 832	3 382	3 173	3 921	13 443	13 391	14 141		
21	255	1 090	844	3 293	3 441	3 590	1 149	1 690	1 779	9 130	10 909	11 342	532	918	1 167	2 955	2 739	2 999	1 936	3 698	3 790	15 379	17 089	17 931		
22	1 104	603	1 284	4 397	4 044	4 875	1 526	1 468	2 099	10 657	12 377	13 441	717	774	1 277	3 672	3 513	4 276	3 347	2 844	4 661	18 726	19 934	22 592		
23	1 237	1 063	986	5 635	5 107	5 861	1 992	1 277	1 621	12 648	13 653	15 063	1 034	716	651	4 706	4 229	4 927	4 263	3 056	3 258	22 989	22 989	25 851		
24	886	678	1 000	6 521	5 785	6 861	1 041	1 748	2 000	13 689	15 402	17 063	776	1 043	1 250	5 482	5 272	6 177	2 703	3 469	4 250	25 691	26 458	30 101		
25	318	875	1 000	6 839	6 660	7 861	1 599	1 089	2 000	15 288	16 490	19 063	1 453	1 236	1 250	6 934	6 508	7 427	3 370	3 200	4 250	29 061	29 658	34 351		
26	1 005	656	1 000	7 843	7 316	8 861	1 153	1 882	2 500	16 442	18 373	21 563	1 664	1 499	1 250	8 598	8 007	8 677	3 822	4 037	4 750	32 883	33 695	39 101		
27	1 195	997	1 250	9 039	8 313	10 111	2 470	2 051	2 750	18 912	20 424	24 313	847	1 123	1 250	9 445	9 130	9 927	4 512	4 172	5 250	37 395	37 867	44 351		
28	1 204	1 191	1 400	10 243	9 504	11 511	2 088	2 480	3 000	20 999	22 904	27 313	1 212	1 262	1 250	10 657	10 392	11 177	4 504	4 933	5 650	41 899	42 800	50 001		
29	1 543	1 040	1 400	11 786	10 544	12 911	3 077	2 233	3 250	24 077	25 137	30 563	2 110	1 380	1 250	12 767	11 772	12 427	6 731	4 653	5 900	48 629	47 453	55 901		
30	1 779	1 097	1 400	13 565	11 641	14 311	3 830	2 756	3 250	27 907	27 893	33 813	1 251	1 993	1 250	14 018	13 766	13 677	6 860	5 847	5 900	55 490	53 300	61 801		
31	1 314	1 146	1 400	14 878	12 787	15 711	2 727	2 026	3 250	30 634	29 920	37 063	2 350	1 257	1 500	16 369	15 023	15 177	6 391	4 429	6 150	61 880	57 730	67 951		
32	767	1 487	1 400	15 645	14 275	17 111	2 321	2 540	3 250	32 955	32 460	40 313	1 662	1 690	1 500	18 030	16 713	16 677	4 750	5 718	6 150	66 630	63 447	74 101		
33	1 109	1 181	1 400	16 754	15 456	18 511	2 297	2 426	3 250	35 252	34 886	43 563	1 602	1 674	1 500	19 632	18 387	18 177	5 007	5 281	6 150	71 637	68 729	80 251		
34	703	1 319	1 400	17 457	16 775	19 911	2 197	1 912	3 000	37 449	36 798	46 563	1 536	2 010	1 500	21 168	20 397	19 677	4 436	5 241	5 900	76 074	73 970	86 151		
35	1 224	1 097	1 250	18 681	17 871	21 161	1 765	1 948	2 500	39 214	38 746	49 063	1 342	1 207	1 250	22 511	21 604	20 927	4 332	4 252	5 000	80 406	78 221	91 151		
36	1 061	1 754	1 250	19 742	19 625	22 411	888	1 263	2 250	40 102	40 009	51 313	949	1 356	1 250	23 460	22 960	22 177	2 898	4 373	4 750	83 304	82 594	95 901		
37	660	1 470	1 000	20 402	21 096	23 411	799	1 493	1 000	40 901	41 503	52 313	514	1 319	1 250	23 973	24 278	23 427	1 973	4 282	3 250	85 276	86 877	99 151		
38	747	999	750	21 149	22 095	24 161	724	641	750	41 625	42 144	53 063	194	1 427	1 000	24 168	25 706	24 427	1 666	3 068	2 500	86 942	89 945	101 651		
39	371	558	500	21 520	22 653	24 661	338	357	500	41 963	42 501	53 563	16	694	650	24 184	26 399	25 077	725	1 609	1 650	87 667	91 553	103 301		
40	204	614	300	21 724	23 267	24 961	107	148	250	42 070	42 649	53 813	14	419	400	24 198	26 818	25 477	325	1 182	950	87 992	92 735	104 251		
41	90	138	250	21 814	23 405	25 211	8	105	500	42 078	42 755	54 313	2	60	200	24 200	26 879	25 677	100	304	950	88 092	93 039	105 201		
42	42	84	100	21 856	23 489	25 311	6	3	250	42 084	42 758	54 563	3	0	100	24 203	26 879	25 777	51	88	450	88 143	93 126	105 651		
43	14	20	50	21 870	23 509	25 361	3	2	100	42 087	42 760	54 663	4	1	50	24 207	26 880	25 827	21	23	200	88 164	93 149	105 851		
44	3	5	25	21 873	23 514	25 386	1	1	50	42 088	42 761	54 713	2	0	0	24 209	26 880	25 827	7	6	75	88 170	93 155	105 926		
	21 879	23 523	25 386		Est 2025	25 000	42 088	42 761	54 713		Est 2025	55 000	24 209	26 881	25 827		Est 2025	26 250	88 191	93 165	105 926		Est 2025	106 250		



# YTD CITRUS EXPORT BY EXIT PORT BY TARGET REGION (PALLETs)

*Note: we are noting the anomaly in the high export volume from ZAPLZ/ZAZBA in 2023 and have raised this with Agrihub.*

Sum of Plt_Qty	Load_Port																			
CGARegionReportAsDesc	MZMPM				ZACPT				ZADUR				ZAPLZ/ZAZBA				Grand Total			
	2025	2024	2023	2022	2025	2024	2023	2022	2025	2024	2023	2022	2025	2024	2023	2022	2025	2024	2023	2022
Africa and Islands		-	-	-	1 217	1 575	2 036	1 068	5 481	4 998	4 937	3 736	597	826	1 728	973	7 295	7 399	8 701	5 777
Europe/NWC		-	-	-	44 719	38 287	64 603	54 906	101 602	68 256	87 077	70 180	34 526	25 273	72 714	44 140	180 847	131 816	224 394	169 226
Far East Asia		40	-	48	300	301	1 479	1 107	48 655	59 845	62 864	87 052	644	728	2 585	1 426	49 600	60 914	66 928	89 633
Middle East	60	2 397	1 478	530	5 428	7 365	5 521	4 626	100 010	70 207	83 541	67 438	36 724	40 142	57 007	36 548	142 162	120 111	147 547	109 142
North-America		-	-	-	37 038	29 472	32 707	24 328	13 810	17 883	15 660	11 125	4 633	9 346	14 744	6 604	55 480	56 701	63 111	42 057
Russian Federation		-	-	-	21 096	18 681	27 512	10 241	42 970	37 614	39 893	23 548	2 154	9 380	4 183	6 717	66 220	65 675	71 588	40 506
South East Asia		180	-	506	1 548	138	1 711	2 002	12 099	10 246	17 248	15 972	1 196	468	4 026	206	14 843	11 032	22 985	18 686
South EU/Med/Black Sea		-	-	-	2 108	2 999	3 136	5 003	16 808	16 474	14 209	10 076	9 789	13 350	20 434	11 605	28 706	32 823	37 779	26 684
South West Asia		-	91	-	282	187	1 314	1 261	4 063	3 162	5 354	4 649	4 224	2 153	3 127	1 245	8 569	5 502	9 886	7 155
UK/Ireland		-	-	-	34 537	30 875	49 267	36 504	15 386	16 524	17 698	12 864	13 761	16 216	23 008	18 615	63 684	63 615	89 973	67 983
Grand Total	60	2 617	1 569	1 084	148 272	129 880	189 286	141 046	360 884	305 209	348 481	306 640	108 249	117 879	203 556	128 079	617 405	555 585	742 892	576 849



# YTD CITRUS EXPORT BY EXIT PORT BY COMMODITY (PALLETS)

*Note: we are noting the anomaly in the high export volume from ZAPLZ/ZAZBA in 2023 and have raised this with Agrihub.*

Sum of Plt_Qty	Load_Port																			
CGAReportVariety2Desc	MZMPM				ZACPT				ZADUR				ZAPLZ/ZAZBA				Grand Total			
	2025	2024	2023	2022	2025	2024	2023	2022	2025	2024	2023	2022	2025	2024	2023	2022	2025	2024	2023	2022
EARLY MANDARINS		60	24	-	75 001	77 009	94 000	68 258	18 419	15 909	18 995	18 630	30 119	32 330	35 941	22 923	123 539	125 308	148 960	109 811
GRAPEFRUIT	20	-	-	-	6 532	3 272	7 053	9 919	126 598	122 259	119 143	125 551	100	156	1 595	4 304	133 230	125 686	127 791	139 774
LATE MANDARINS	40	-	355	-	13 397	3 522	12 320	2 439	31 278	21 788	27 273	14 807	1 055	1 871	1 600	1 485	45 729	27 181	41 548	18 731
LEMONS		1 701	1 016	647	31 351	25 794	49 019	41 062	141 258	112 271	137 739	114 107	58 361	66 830	125 413	77 203	230 970	206 596	313 187	233 019
NAVELS		856	174	297	21 709	20 239	26 367	18 327	32 589	28 492	35 082	30 097	18 253	16 692	39 032	21 941	72 551	66 279	100 655	70 662
VALENCIAS		-	-	140	283	44	527	1 041	10 822	4 491	10 249	3 448	360	-	448	223	11 465	4 535	11 224	4 852
Grand Total	60	2 617	1 569	1 084	148 272	129 880	189 286	141 046	360 964	305 209	348 481	306 640	108 249	117 879	204 029	128 079	617 485	555 585	743 365	576 849



# YTD CITRUS EXPORT BY EXIT PORT BY COT REEFER CONTAINERS (PALLET)

Sum of Pallet Qty		Year			
Exit Port	Country	2021	2022	2023	2025
Cape Town	USA	6 656	3 476	12 418	18 575
	MAURITIUS	420	380	298	445
	INDIA	220	20	20	220
	PHILIPPINES			40	40
	TAIWAN	520	156	20	40
	SRI LANKA	40		20	21
	INDONESIA			40	
	JAPAN	200	80		
	CHINA	60	20	139	
	JORDAN	180		51	
Cape Town Total		8 296	4 132	13 046	19 341
Durban	CHINA	54 906	58 075	29 887	25 232
	JAPAN	2 840	9 172	3 112	3 280
	SOUTH KOREA	1 940	2 380	2 320	2 400
	INDIA	2 644	680	1 319	1 603
	TAIWAN	3 538	2 219	2 576	1 268
	MAURITIUS	1 340	920	800	1 017
	SRI LANKA	60			120
	INDONESIA	100	80	120	40
	THAILAND	20			20
	PHILIPPINES		20	138	20
	VIETNAM	20	40		
	JORDAN	1 942	770	1 423	
Durban Total		69 350	74 356	41 695	35 000
PE/Coega	INDIA	360	280	780	1 925
	CHINA	600	140	698	100
	TAIWAN	220	120	240	93
	MAURITIUS	80	50	175	40
	JORDAN	680	140	820	
	INDONESIA			40	
	VIETNAM	20			
	PHILIPPINES		20		
	SRI LANKA	60			
PE/Coega Total		2 020	750	2 753	2 158
Maputo	INDIA			20	
Maputo Total				20	
Grand Total		79 666	79 238	57 514	56 499





# WEEK 24/25 CORRIDOR OPERATIONAL OVERVIEW

## Northern Corridor – Dave Watts

- General operational perceptions: Road Rehabilitation project commenced see Red Flag issues below. Expected reefer volumes increasing at DCT.
- TPT equipment availability, operational overview & performance: Both Durban Terminals working relatively well with 73 straddles operating at DCT and 15 RTG's at Pier. Truck Turnaround Time (TTT) at DCT has extended possibly due to Red Flag issues noted below. Pier 1 and Point MPT TTT within KPI's
- TPT 24 hour reefer stack adherence DCT Reefer stacks occupancy AM the 29<sup>th</sup> 35% 785 slots taken, 747 export 27 imports 10 Tranships. 821 Exports planned for next 24 hours and 93 Imports. Pier 1 also 35% occupancy 200 exports 23 imports 54 tranships. MPT Point 68 slots full with 45% occupancy.
- Conventional reefer vessel loading and status: Week 24/25 – CS Standard (EU/UK/RS) completing with CS Pride (EU/UK/RS) due in over the weekend. **NOTE FROM REEFER ALLIANCE – VESSEL NAMELY , COOL EXPLORER ETA WEEK 29, IS A HIGH CUBE VESSEL (BOTH UNDERDECK AND HC REEFERS ONDECK).**
- Reefer rail long haul and short haul status: YTD 660 reefer containers have been railed into DCT from the 3 key sites, Bela Bela in Limpopo, City Deep in Johannesburg (1<sup>st</sup> train depaerted this morning) and Bayhead in Durban.
- Operational red flags: The 17<sup>th</sup> pm saw the introduction of lane diversions on Bayhead Road and other roads in Bayhead Park as the rehabilitation project commenced in earnest.. Overnight and during the 18<sup>th</sup> the roads were seriously congested with the situation becoming chaotic around the Bayhead park precinct. Consistent truck breakdowns at critical points, four on the 18<sup>th</sup> added to the congestion and delays. Situation improved on the 19<sup>th</sup> with traffic flowing freely during the day. It does appear that evening and night shift traffic will likely experience delays as traffic control becomes problematic. Trucker representatives will be meeting with the Port Manager week 26.

## Central Corridor – Mitchell Brooke

- General operational perceptions: this past week operations at the ports has been mostly fluid apart from intermittent system issues as the terminals. Due to high swells, the vessels at NCT have not been able to work as the Shore Tensioner units are not deployed due to malfunction. 10 Shore tensioner units are being brought in from Durban and Cape Town to assist. Both NCT and PECT reefer occupancy has remained less than 50% for most part of the week. However, there is an overlap of main EU services in week 26 that will cause terminal throughput and occupancy levels to increase.
- TPT equipment availability, operational overview & performance: Both NCT and PECT equipment fully compliment. Note repairs to NCT STS crane 6 scheduled.
- TPT 24 hour reefer stack adherence: No issues to highlight.
- Conventional reefer vessel loading and status: Week 24/25 – Knud Reefer (RS) departed, Baltic Jasmine (RS) completing with CS Standard (EU/UK/RS) due to arrive during the weekend.
- Reefer rail long haul and short haul status: 200 Reefer units have been railed from Deal Party to NCT YTD.
- Operational red flags: High swell forecast for Algoa Bay can cause vessel operational disruption at NCT. Wind forecast for the coming week may cause intermittent operational disruption at both PECT and NCT. NCT will operate a 2 berth operation as repairs will be done on shore crane 6 between 23/06 to 02/07 (agw).

## Western Corridor – Antoinette van Heerden

- For a report on Western Cape Corridor, kindly email [Antoinette@fpef.co.za](mailto:Antoinette@fpef.co.za) to receive the report.

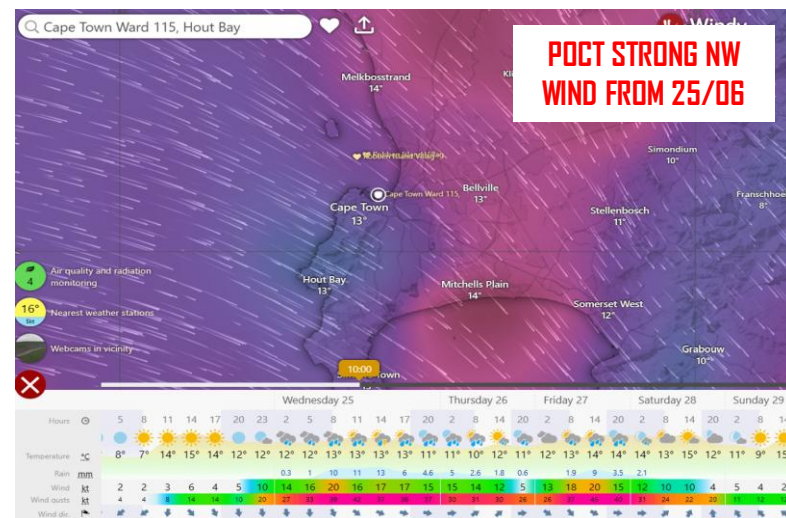
# PPECB WEEKLY REGIONAL OPERATIONAL DATA OVERVIEW – Week 24

REGIONS	DURBAN	EC	CPT	SOUTH	NORTH	TOTAL
Container Cleanliness Inspection	2683	511	3581	0	145	6920
Container Cleanliness Rejection	422	84	352	0	6	864
Percentage Rejections	16%	16.4%	10%	0%	4%	
2024	2902	763	2322	0	132	6119
Total Cold Stores handling Citrus		25	8	37	5	
Total Cold Storage Capacity	98150	41 962	42500	30780	13858	
Pallets under cooling	61985	30459	17150	11506	2940	124040
Percentage - Occupancy	61%	72,5%	40%	37%	21%	
Total Normal Containers	2001	1405	682	511	152	4751
Total Cold Treatment Containers	163	15	218	93	1	490
Total Containers Stuffed	2164	1420	900	604	153	5241
2024	1927	1174	602	697	39	4439
Specialised Refrigerated Vessels	3	1	2	0	0	
No. of non-cold treatment vessels	2	1	1	0	0	
No of pallets - Citrus	11649	3599	1252	0	0	16500
No of cold treatment vessels	1	0	1	0	0	
No of pallets	0	0	4200	0	0	4200
Unplugged Containers - Terminals	0	0	0	0	0	
Quality/ Concerns	0	0	0	0	0	
Any other comments						

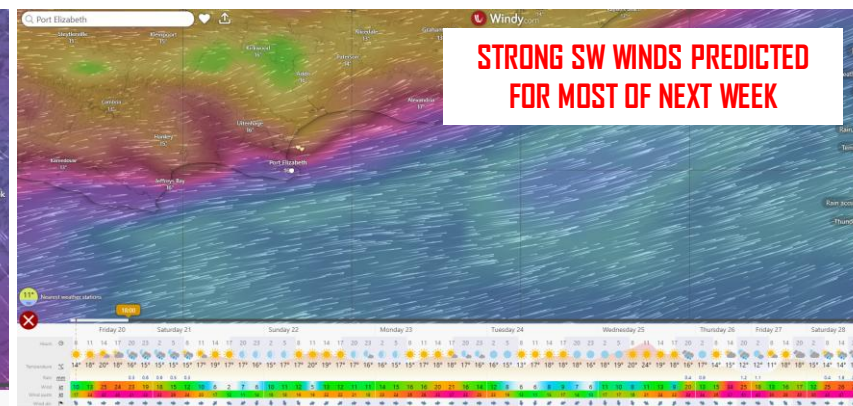


# SOUTHERN AFRICAN 7 DAY WEATHER FORECAST

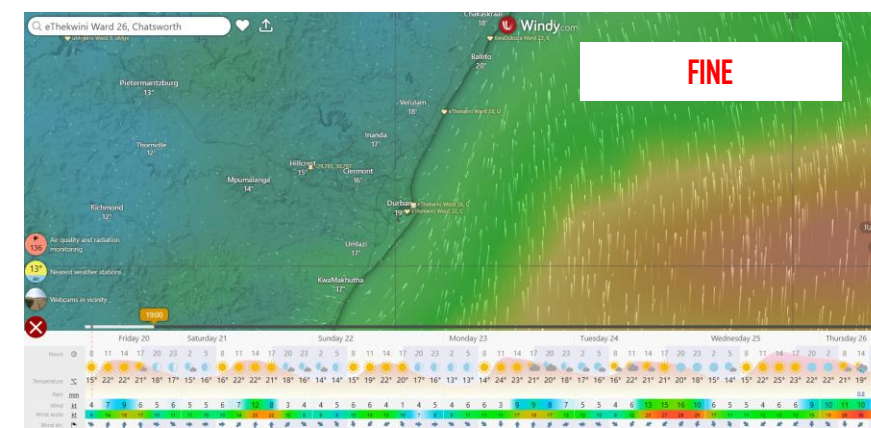
## CAPE TOWN 7 DAY WIND FORECAST



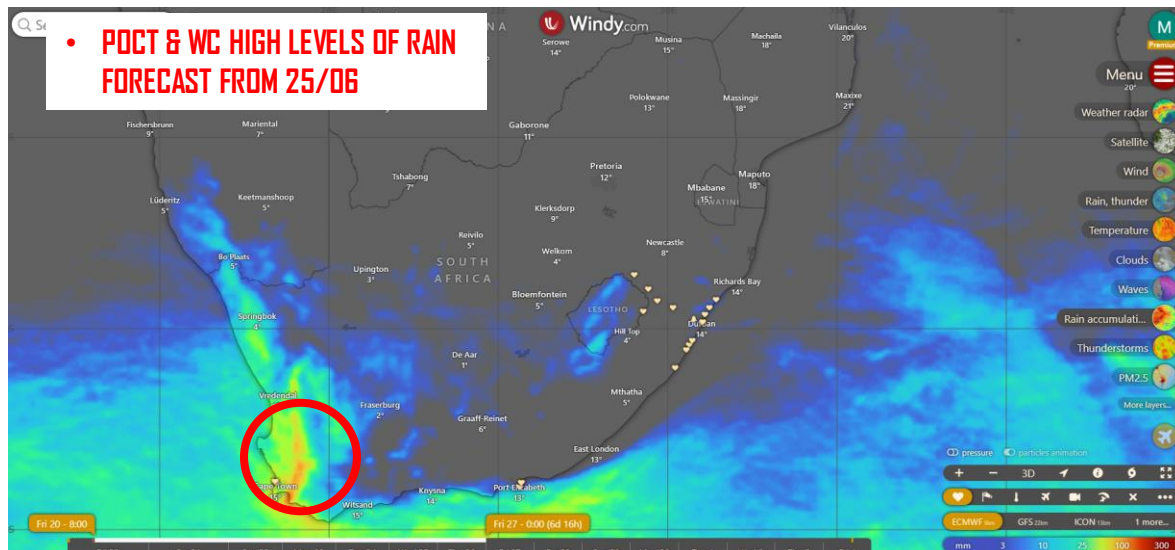
## ALGOA BAY 7 DAY WIND FORECAST



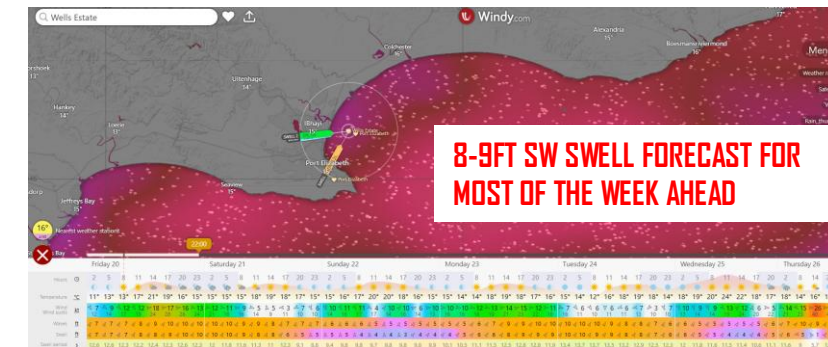
## DURBAN 7 DAY WIND FORECAST



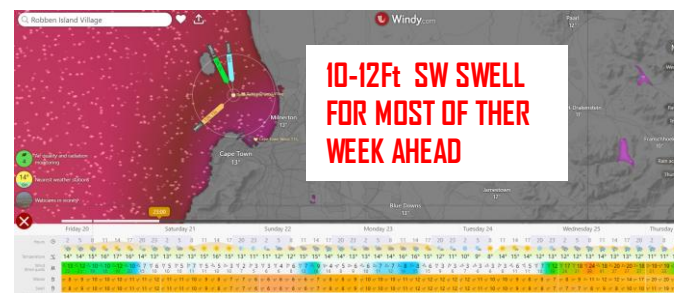
## NATIONAL 7 DAY RAIN FORECAST



## ALGOA BAY 7 DAY SWELL FORECAST



## TABLE BAY 7 DAY SWELL FORECAST



# CURRENT GLOBAL LOGISTICS NEWSFLASH SCAN

- 🍊 Meat importers welcome partial lifting of poultry ban: [https://www.freightnews.co.za/article/meat-importers-welcome-partial-lifting-poultry-ban?utm\\_source=newsletter&utm\\_medium=email&utm\\_campaign=daily-news-2025-06-19&utm\\_content=meat-importers-welcome-partial-lifting-of-poultry-ban](https://www.freightnews.co.za/article/meat-importers-welcome-partial-lifting-poultry-ban?utm_source=newsletter&utm_medium=email&utm_campaign=daily-news-2025-06-19&utm_content=meat-importers-welcome-partial-lifting-of-poultry-ban) (Important relevant to import reefer capacity requirements at the SA terminals already under strain)
- 🍊 Mega ships gradually return to Suez Canal: [https://www.freshplaza.com/africa/article/9742425/mega-ships-gradually-return-to-suez-canal/?utm\\_medium=email](https://www.freshplaza.com/africa/article/9742425/mega-ships-gradually-return-to-suez-canal/?utm_medium=email)
- 🍊 It has been another critical week for South African trade negotiations with US, with Donald Trump and Cyril Ramaphosa meeting at the G-7 summit in Canada: <https://www.fruitnet.com/eurofruit/us-south-africa-chicken-deal-agreed-could-be-next/267342.article> (Potentially more pressure on import reefers demand for local terminal capacity)
- 🍊 Data integration could improve South Africa's port performance: <https://www.freightnews.co.za/article/data-integration-could-improve-south-africas-port-performance>
- 🍊 Transnet Engineering to manufacture key port equipment: [https://www.freightnews.co.za/article/transnet-engineering-manufacture-key-port-equipment?utm\\_source=newsletter&utm\\_medium=email&utm\\_campaign=daily-news-2025-06-13&utm\\_content=transnet-engineering-to-manufacture-key-port-equipment](https://www.freightnews.co.za/article/transnet-engineering-manufacture-key-port-equipment?utm_source=newsletter&utm_medium=email&utm_campaign=daily-news-2025-06-13&utm_content=transnet-engineering-to-manufacture-key-port-equipment)
- 🍊 Success of privatised African ports shows the way for SA: [https://www.freightnews.co.za/article/success-privatised-african-ports-shows-way-sa?utm\\_source=newsletter&utm\\_medium=email&utm\\_campaign=daily-news-2025-06-12&utm\\_content=success-of-privatised-african-ports-shows-the-way-for-sa](https://www.freightnews.co.za/article/success-privatised-african-ports-shows-way-sa?utm_source=newsletter&utm_medium=email&utm_campaign=daily-news-2025-06-12&utm_content=success-of-privatised-african-ports-shows-the-way-for-sa)